



# **LOIE**

## **District Hospital Reutte**

**Tyrol**

Version 2.0

by oe3gsu



# Austrian X-Plane Design Group

## Content:

1. The Original .....	3
2. The scenery .....	6
3. Functions (summary) .....	6
4. Installation .....	7
5. Recommended settings .....	7
6. Required Software .....	7
7. Used Libraries .....	7
8. Recommended addons .....	8
9. Credits .....	8
10. Betatester-Team .....	8
11. License terms .....	9

# Austrian X-Plane Design Group

## 1. The Original

### Die Geschichte des Bezirkskrankenhauses Reutte

The actual story begins in 1735. At that time, the Council in Reutte decided to buy the "Palsische Haus" at 400 Gulden. Thus, this house was (now Kög 22), the first civil hospital.

The first permanent staff physician in the municipality of Reutte, was Dr. Peter Paul Mayr, whose service began in 1758. The newly created at that time Kreckelmoos bathroom had a large conveyor Dr. Mayr. However, it should not be so far that this place was used as a hospital. In 1795 the "Pfarrliche Spital und Armenhaus" (now Senior Center "Zum guten Hirten", Allgäuer Straße) as "hospital" opens. Only on 12 December 1926, the Bad Kreckelmoos was taken as the hospital of the Brothers of Charity run once started on 27 April 1925, the renovation and expansion. With the exception of the period from 1939 to 1946, the hospital was conducted until 1 January 1961 by the Brothers of Charity. On the basis of detailed consideration and cost calculations, the committee decided on 17 May 1963 the construction of a new district hospital. The groundbreaking ceremony took place in today's complex on September 1, 1964. On November 9, 1968, the newly built district hospital was inaugurated. Over the years, the old building was literally bursting at the seams. Just the ambulances and the surgery department were physically and technically no longer up to date. After careful planning began in 1992, the extension of the new district hospital on the existing site. Today the hospital houses next to the ambulances and patient wards also a generously sized operation department. The east wing of the old building was redesigned from the ground up and is integrated into the new building. The west wing was as district nursing home "Haus Ehrenberg" his destiny.

(Source: [http://www.bkh-reutte.at/index.php?option=com\\_content&view=category&layout=blog&id=93&Itemid=125](http://www.bkh-reutte.at/index.php?option=com_content&view=category&layout=blog&id=93&Itemid=125))

### Historical Development

In March 2002, the emergency helicopter ARA Flugrettungs GmbH in Reutte was put into service. First, the RK-2 was stationed at the airfield yards. After the flood disaster and not further possible use of the premises was carried out in August 2005 the company moved to the grounds of the hospital and the nursing home Reutte-Ehenbichl. Moving into the "House of Health" was launched upon its conversion in June 2007. In September 2008, the new hangar for the helicopter type BK 117 was completed.



## Austrian X-Plane Design Group

### Special Features

Due to the alpine area of application include the rescue of injured persons from areas with difficult access to one of the many tasks of Reuttener emergency medical helicopter. Since July 2011, the emergency helicopter ARA Flugrettungs GmbH has a fixed winch, can be carried out with the inserts in alpine terrain, if the landing is not possible on site. The winch cable is 90 m long, the length can be adjusted flexibly. A total of up to 270 kg can be transported. With the winds the previous Fixtauverfahren was replaced. In addition, the emergency helicopter RK-2 for the district Reutte is an important and reliable partner in the event of a disaster. To ensure that the mobile medical does not proceed to the power board is on board "RK-2" In addition, a 230V inverter for use. Thanks to this voltage converter a perpetual power supply is ensured that serves to patient safety: The 12-volt connections thus stands during the flight redundant power available to prevent the failure of this vital equipment due to lack of battery capacity.

### Operator

ARA-Flugrettungs GmbH

### Operation duty

from sunrise (from 7 o'clock)  
to sunset

### Staff

Pilots of the ARA Flugrettung  
Emergency doctor from different clinics  
Paramedics/Winch Operators from ARA Flugrettung  
air rescue from ARA Flugrettung

### Special qualifications of the staff

Emergency doctors  
Department of Anesthesia, Surgery and Internal Medicine  
Paramedics  
HEMS (Helicopter Emergency Medical Service) Crew Member and training as Winch Operator

### Request

In case of emergency and intensive care transports: Integrierte Landesleitstelle Tirol

### Kontakt

ARA-Flugrettungs GmbH  
Krankenhausstr. 39  
6600 Ehenbichl/Reutte

(Source: <https://www.drf-luftrettung.de/de/menschen/standorte/station-reutte>)



## Austrian X-Plane Design Group

Localization	
Lat/Long	N47°28.40' / E010°42.68'
National grid	N 47°28.40 / E 010°42.69
Elevation (ft)	2822
Helipad (obstacles see below)	
Max. allowable mass	6 t.
Surface	ground / concrete
Windcone	yes
Fuel	no
Night operation	
Lighting	yes
Activation frq/phone	via hospital phone
Activation tones	none
Lighting cycles	none
Communication	
Frequency	BOS Reutte
Radio channel/ Callname	LST Reutte
Airspace information	
Airspace info	LOIR TWR 122,400
Special procedures	none
Approach from	SW/E
Departure direction	SW / E
Area weather info	LOIR TWR 122,400 / Wien Information 124,400

(Source: <http://old.helipad.org/app/default.asp?padId=238/>)

# Austrian X-Plane Design Group

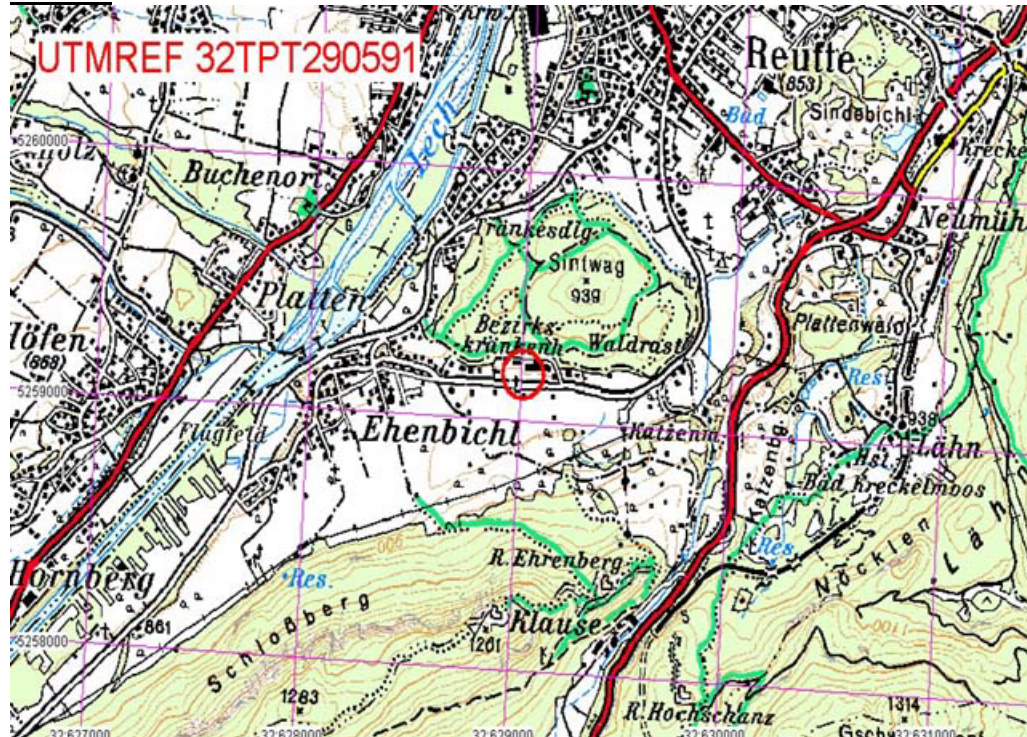
## 2. The scenery

The scene is based on publicly available information.

All objects have been completely rebuilt.

The scenery includes night textures and realistic lighting (Only X-Plane 10, 11).

### Charts



## 3. Functions (summary)

- Photorealistic Scenery
- Compatibel to OSM+autogen V6.0 from PliotBalu
- Realistic Groundtextures at the airport
- various buildings and structures in the area
- realistic Markings at the apron and the taxiways
- realistic lighting \*)
- nighttextures

\*) X-Plane 10, 11 only!





## Austrian X-Plane Design Group

### 4. Installation

Just copy the folder "LOIE BKH Reutte 2.0" in the compressed file after unpacking in the "Custom Scenery" - folder.

#### directory structure:

```
<X-Plane-Folder>/
  Custom Scenery /
    LOIE BKH Reutte 2.0/
      Earth nav data and others)
```

and restart X-Plane.

### 5. Recommended settings

To visualize all light effects, HDR should be activated. The higher the settings for "texture resolution" and "airport detail" the better the quality of the scenery but the more affect on the FPS ratio.

### 6. Required Software

X-Plane® Version 11.11+, 10.30+ or 9.7

### 7. Used Libraries

none



## Austrian X-Plane Design Group

### 8. Recommended addons

Although the scenery will work without any addons, we recommend to use the following ones for the whole experience (pictures taken with addons installed):

OSM Europe osm+autogen by PilotBalu,

Download: [http://simheaven.com/?page\\_id=23](http://simheaven.com/?page_id=23)

to have streets and buildings from OSM and autogen where is no coverage of such data.

or

Osm Austria beta6.0 by PilotBalu

Download: <http://simheaven.com/experimental/>

HD Mesh Scenery v2 by alpilotx

Download: <http://www.alpilotx.net/downloads/x-plane-10-hd-scenery-mesh-v2/>

Europe Library von LyAvain,

Download: [http://simheaven.com/?page\\_id=14](http://simheaven.com/?page_id=14)

to see European instead of US buildings.

### 9. Credits

LAMINAR RESEARCH®

X-Plane®

Ben Supnik

[WED](#) (Version 1.6.1 verwendet)

marginal

[Sketchup-Plugin](#)

uwespeed

European vehicles

### 10. Betatester-Team

all member of AXDG.





## Austrian X-Plane Design Group

### 11. License terms

This scenery is freeware and stays in the possession of the developer/s. Upon installation of the freeware the user accepts the terms of use. It is not allowed to upload the scenery or parts of it to other websites without the explicit permission in writing of the developer/s. Furthermore it is forbidden to use the scenery or parts of it on a commercial basis without the explicit permission in writing of the developer/s. Changes and modifications for the private use are allowed. But it is not allowed to share such changed or modified versions without the explicit written permission from the developer/s.

Apart from that the respective terms of copyright law are applicable.

The developer/s are not responsible for any malfunctions or possible failures of hard- or software in connection with this scenery. Under <http://forum.aerosoft.com/index.php?forum/621-freeware/> the developer/s are available for questions or remarks regarding this scenery but cannot give the guarantee that this scenery will work on all computer systems.

Have fun with arrivals and departures in Reutte

*oe3gsu, Gerhard*

