



# **LOAS Spitzerberg**

## **Lower Austria**

Version 2.0

by petjedi



# Austrian X-Plane Design Group

## Content:

1. The original .....	3
2. The Scenery .....	5
3. Functions (Summary).....	5
4. Installation .....	6
5. Recommended settings .....	6
6. Required Software.....	6
7. Comments for the X-Plane 9 version .....	6
8. Used Libraries .....	6
9. Recommended addons .....	7
10. Credits .....	7
11. Betatester-Team.....	7
12. License terms.....	8

# Austrian X-Plane Design Group

## 1. The original

The Spitzerberg airfield is located 14.7Nm south of Vienna International Airport (LOWW). The course has a marked grass runway for powered airplanes and an unmarked runway for gliders. The Flugsportzentrum Spitzerberg also includes a flight school for sailing and airplanes.

Operating hours: PPR, usually from 09:00 - 20:00 local time.

Tower: 122.07 Mhz

Track: 15/33

NO Jet-A1 available!

### The History:

The Spitzerberg, which gave the airfield and since 1955 also a national sports school its name, until 1929 was nothing more than a landscape survey without special significance. Since that time, however, the mountain and subsequently the Hundsheimer Kogel gained in sporting interest. This was a then quite unusual sport, namely the motorless flight.

The first group to use the Spitzerberg site was the Sportfliegervereinigung in the Austrian Aero-Club. In the spring of 1929, the first gliding flights were made from the slopes of Spitzerberg and the "neighboring mountain", the Hundsheimer Kogel. At this time reminiscent of Hundsheimer Kogel to this day a plaque, which is symbolically guarded by a stone eagle.

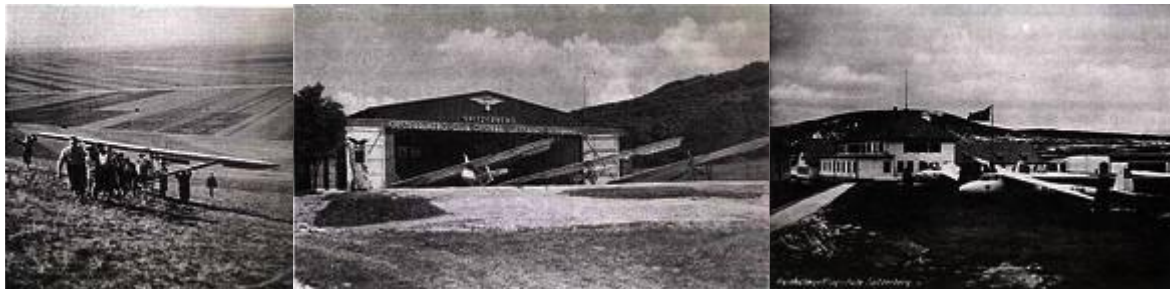


### **Development to the flight and training center**

As early as 1931, the first long-haul flight with 2 hours and 23 minutes (take-off elevation 250-300 m) took place on the slopes of the Hundsheimer Kogel in a disguised "pupil". This was the beginning of a gliding operation in the 1930s, which attracted countless clubs. Favored by the optimal conditions fell into this time also many national and international records which were accomplished from the Spitzerberg (for example 1937: Austrian course record 157 km, Dauerflugrecord single-seater 27 h 50 min, 1938: Dauerflugrecord double-seater: 40 h, 38 min).

## Austrian X-Plane Design Group

In 1936, the Segelfliegerheim Spitzerberg with its spacious hangar was built and inaugurated, which is in operation until the end of 1939. Then, after detailed planning (designed by architect Christl), the expansion of the airfield to a flight school is started. Finally, on 19 October 1940, the Imperial Flying School Spitzerberg opened and handed over their purpose. The building complex and the airfield still form the core of today's aviation facility.



### the post war period

The buildings are badly damaged by war and post-war events. The main building was poorly habitable as a ruin, the side wings were considered ready for demolition. In 1946, after protracted negotiations, the transfer of the remaining Spitzerberg buildings to the Federal Ministry of Education took place to save them from ruin. In 1950 the "Austrian Aero-Club" was founded and in 1951 the Landesverband NÖ. End of 1953, the restoration work and the expansion of the school begin. After the conclusion of the State Treaty, the ceremonial opening of the "Spessberg National Sports School" will take place on 02.10.1955.

With the full commissioning of the school began almost immediately an influx of mainly Viennese glider groups, which had to remain on the ground during the Russian occupation.



Since 1958, new glider pilots have been trained in 3-week intensive courses. This type of training has proven itself to this day and is offered exclusively by the Spitzerberg flying school.



## Austrian X-Plane Design Group

### The Flugsportzentrum Spitzerberg from October 2016

From 1st October 2016, a new era began at the Spitzerberg airfield!

The end of the old federal sports school in 1997 and the subsequent transfer of the business to the Österr. Aeroclub certainly brought about fewer changes compared to the current situation.

As a new owner, the well-known aviation enthusiast Dkfm. Mateschitz attributable company, the Red Bull Air Race GmbH. (abbreviated RBAR) the operative operation of the airfield Spitzerberg.

RBAR is responsible for all flight operations (including operations manager, hangar, slope) and the buildings.

The new association Flugsportzentrum Spitzerberg (FSZ) is responsible for the operation of a flight school for glider, glider and glider flights, as well as the management and chartering of the former Aeroclub FSZ aircraft.

(Source: <http://www.spitzerberg.at>)

## 2. The Scenery

The scenery is photorealistic on the basis of photos taken on site. For version 2.0, all textures and objects have been redesigned.

The scenery includes night textures and realistic lighting (X-Plane 10, 11 only)

### Charts

enclosed.

## 3. Functions (Summary)

- Photorealistic Scenery
- Compatible to "OSM+autogen" or "Osm\_Austria\_beta5.0" from PilotBalu
- realistic ground texture at the airfield
- real lighting, individual built
- night textures and lighting \*)

\*) X-Plane 10, 11 only!



## Austrian X-Plane Design Group

### 4. Installation

Just copy the folder " LOAS Spitzerberg 2.0" in the compressed file after unpacking in the "Custom Scenery" - folder.

#### directory structure:

```
<X-Plane-Verzeichnis>/  
    Custom Scenery /  
        LOAS Spitzerberg 2.0/  
            Earth nav data and others)
```

and restart X-Plane.

### 5. Recommended settings

To visualize all light effects, HDR should be activated. The higher the settings for "texture resolution" and "airport detail" the better the quality of the scenery but the more affect on the FPS ratio.

### 6. Required Software

X-Plane® Version 11.10+, 10.30+ or 9.7

### 7. Comments for the X-Plane 9 version

Unfortunately some functions of the scenery must be disabled for X-Plane 9 and therefore it will not look like on the pictures which where taken with XP10.30RC1).

### 8. Used Libraries

OpenSceneryX



## Austrian X-Plane Design Group

### 9. Recommended addons

Although the scenery will work without any addons, we recommend to use the following ones for the whole experience (pictures taken with addons installed):

OSM Europe osm+autogen by PilotBalu,

Download from: [http://simheaven.com/?page\\_id=23](http://simheaven.com/?page_id=23)

to have streets and buildings from OSM and autogen where is no coverage of such data.

or

Osm Austria beta 5.0 by PilotBalu

Download from: <http://simheaven.com/experimental/>

HD Mesh Scenery v2 by alpilotx

Download from: <http://www.alpilotx.net/downloads/x-plane-10-hd-scenery-mesh-v2/>

Europe Library von LyAvain,

Download from: [http://simheaven.com/?page\\_id=14](http://simheaven.com/?page_id=14)

to see European instead of US buildings.

### 10. Credits

LAMINAR RESEARCH®

Ben Supnik

marginal

Uwespeed

vonhinx

Hr. Oppelmayer

X-Plane®

[WED](#) (Version 1.6.1 used)

[Sketchup-Plugin](#)

Cars

glider trailers

Plant manager, for the possibility to take the pictures

### 11. Betatester-Team

DanielMan, greuff, PAA196, PetJedi, grissley, kalle, merlin  
all member of AXDG.





## Austrian X-Plane Design Group

### 12. License terms

This scenery is freeware and stays in the possession of the developer/s. Upon installation of the freeware the user accepts the terms of use. It is not allowed to upload the scenery or parts of it to other websites without the explicit permission in writing of the developer/s. Furthermore it is forbidden to use the scenery or parts of it on a commercial basis without the explicit permission in writing of the developer/s. Changes and modifications for the private use are allowed. But it is not allowed to share such changed or modified versions without the explicit written permission from the developer/s.

Apart from that the respective terms of copyright law are applicable.

The developer/s are not responsible for any malfunctions or possible failures of hard- or software in connection with this scenery. Under

<http://forum.aerosoft.com/index.php?forum/621-freeware/> the developer/s are available for questions or remarks regarding this scenery but cannot give the guarantee that this scenery will work on all computer systems.

Have fun with arrivals and departures in Spitzerberg

*petjedi*

