



# LOAD

## Völtendorf Lower Austria

Version 2.1

by Markus, oe3gsu



# Austrian X-Plane Design Group

## Inhalt:

1. Das Vorbild .....	Fehler! Textmarke nicht definiert.
2. Die Szenerie .....	5
3. Funktionen (Zusammenfassung) .....	6
4. Installation .....	6
5. Empfohlene Einstellungen .....	Fehler! Textmarke nicht definiert.
6. Erforderliche Software .....	Fehler! Textmarke nicht definiert.
7. Verwendete Libraries .....	Fehler! Textmarke nicht definiert.
8. Empfohlene Addons.....	Fehler! Textmarke nicht definiert.
9. Credits .....	7
10. Betatester-Team.....	7
11. Lizenzbestimmungen .....	Fehler! Textmarke nicht definiert.

# Austrian X-Plane Design Group

## 1. The Original



The Völtendorf airfield is located south-west of the state capital St.Pölten directly at the Pielachtaler Bundesstraße. Located at the airfield, the St.Pölten air club is equipped with a modern and attractive aircraft park.

The flying club offers: info and pilot flights for the pilot training as well as, of course, the possibility to fly at an expense with one of our club machines.

Experience the flight sport, look at the beauty of your home from the air! Come by, visit the pilots' club St.Pölten and its pilots.

A modern airfield, gliders, motor sailers and motor aircraft await you.

The airfield Völtendorf has a 500m grass runway, which is fastened with plastic mats. Thus, e.g. after rain operation possible. The place is PPR, during the week there is a manager on call, on the weekends is depending on the weather regular flight operation from 9.00 LOC. For the latest information, please contact the operations manager at tel .: + 43 / (0) 664/2650907, Tel. Flugplatz: 02742/883210

### **Approaching information:**

ICAO- callsign: LOAD language: Deutsch

Province: Lower Austria, about 4 km southwest of St.Pölten

Approved for: gliders, motor gliders, gliders, helicopters, ultralights, balloons

MTOW----> 5700kg

Radio: Airport 125,600 WIEN Information 124,400

Gliding ground / board 123,400 board/ board 122,800

# Austrian X-Plane Design Group

Runway: 08/26 501/501 x 25m Gras

Aerodrome elevation: 325 m / 1066 feet

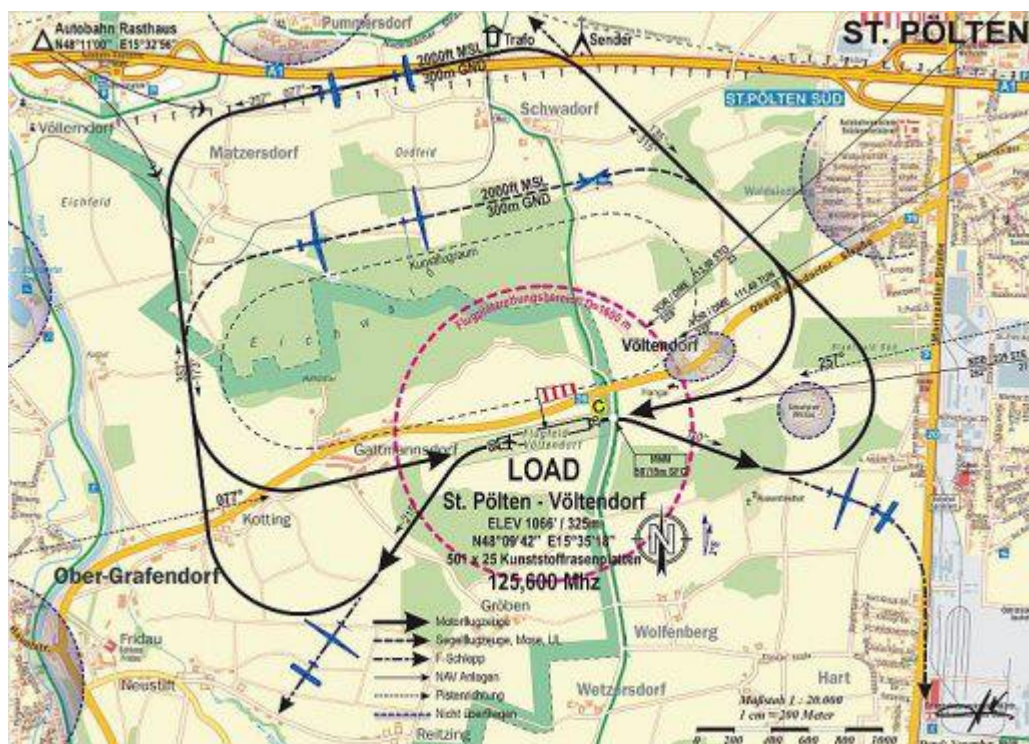
GPS Koordinates: N 48 09'38" - E 15 35'15"

Operating time summer: 9.00 to ECET. On Saturdays, Sundays and public holidays during the flight season, from 1 April to 31 October, an operator is present. On weekdays, the BL (stand-by service)

Operating time Winter: Depending on the weather

Training possibilities: gliding, motor-flight

Special place for noise reasons, avoid residential areas. Attention to gliders in the area



**Attention:** offset threshold line direction 26 or starting direction 08, 65m west of the threshold 26, marked on the side of the runway - minimum height when crossing Landesstraße 15m, crosses directly on the runway Piste 26

**Airfield holder:** Flugplatz Völtendorf Betriebs GmbH, 5020 Salzburg, Peterbrunnstraße 17

## Austrian X-Plane Design Group



(Quelle: <http://www.voeltendorf.at/load/>)

## 2. The scenery

The scenery is based on publicly accessible information and photos taken in 2013.  
All objects have been completely rebuilt.  
The package contains night textures and realistic lighting (only X-plane 10, 11).

### Kartenmaterial

see above



## Austrian X-Plane Design Group

### 3. Functions (summary)

- • Photorealistic scenery
- • Compatible with "OSM + autogen" or "Osm\_Austria\_beta6.0" by PilotBalu
- • Realistic ground texture at the airport and in the surrounding area
- • realistic markings on the helipad and the apron
- • Night textures
- • Realistic lighting \*)
- • Compatible with XP11

\*) X-Plane 10+, 11.10 only

### 4. Installation

Just copy the folder "LOAD Voeltendorf 2.1" in the compressed file after unpacking in the "Custom Scenery" - folder.

#### directory structure:

```
<X-Plane-Verzeichnis>/
  Custom Scenery /
    LOAD Voeltendorf 2.1 /
      Earth nav data und andere)
```

and restart X-Plane.

### 5. Recommended settings

To visualize all light effects, HDR should be activated. The higher the settings for "texture resolution" and "airport detail" the better the quality of the scenery but the more affect on the FPS ratio.

### 6. Required Software

X-Plane® Version 11.05, 10.45+ or 9.7

### 7. Used Libraries

OpenSceneryX - download: <http://www.opensceneryx.com/>



## Austrian X-Plane Design Group

### 8. Recommended addons

Although the scenery will work without any addons, we recommend to use the following ones for the whole experience (pictures taken with addons installed):

OSM Europe osm+autogen by PilotBalu,

Download: [http://simheaven.com/?page\\_id=23](http://simheaven.com/?page_id=23)

to have streets and buildings from OSM and autogen where is no coverage of such data.

or

Osm Austria beta6.0 by PilotBalu

Download: <http://simheaven.com/experimental/>

HD Mesh Scenery v2 by alpilotx

Download: <http://www.alpilotx.net/downloads/x-plane-10-hd-scenery-mesh-v2/>

Europe Library von LyAvain,

Download: [http://simheaven.com/?page\\_id=14](http://simheaven.com/?page_id=14)

to see European instead of US buildings.

### 9. Credits

LAMINAR RESEARCH®

Ben Supnik

marginal

X-Plane®

[WED](#) (Version 1.60 verwendet)

[Sketchup-Plugin](#)

### 10. Betatester-Team

all members of AXDG.



## Austrian X-Plane Design Group

### 11. License terms

This scenery is freeware and stays in the possession of the developer/s. Upon installation of the freeware the user accepts the terms of use. It is not allowed to upload the scenery or parts of it to other websites without the explicit permission in writing of the developer/s. Furthermore it is forbidden to use the scenery or parts of it on a commercial basis without the explicit permission in writing of the developer/s. Changes and modifications for the private use are allowed. But it is not allowed to share such changed or modified versions without the explicit written permission from the developer/s.

Apart from that the respective terms of copyright law are applicable.

The developer/s are not responsible for any malfunctions or possible failures of hard- or software in connection with this scenery. Under <http://forum.aerosoft.com/index.php?/forum/621-freeware/> the developer/s are available for questions or remarks regarding this scenery but cannot give the guarantee that this scenery will work on all computer systems.

Have fun with arrivals and departures in Völtendorf

*Markus, oe3gsu, Gerhard*

