



**LOAC
Heliport
Hospital Kittsee
Burgenland**

Version 1.0

by oe3gsu



Austrian X-Plane Design Group

Content:

1. The Original	3
2. The scenery	6
3. Functions (summary)	6
4. Installation	6
5. Recommended settings	7
6. Required Software	7
7. Used Libraries	7
8. Recommended addons	7
9. Credits	7
10. Betatester-Team	8
11. License terms	8

Austrian X-Plane Design Group

1. The Original



Development



Dr. Ladislaus Count Batthyány, the doctor of the poor (1870-1931) founded the hospital as a private hospital. Construction has begun on the plans of bratislavian architect Durvay Antal on 08/28/1900. On 07.09.1902 it was inaugurated by the Kittsee Dechant Ruzics Gyula. The cost of the 44 m long and 12 m wide, modern equipped hospital amounted to 80,000 crowns. It had 18 beds, 2 operating rooms and an X-ray device. All costs came to Prince Batthyány. The patients were treated free of charge. He operated itself and was famous for his eye particularly cataract in Europe.

Austrian X-Plane Design Group

On 01.05.1904 he took Dr. Otto Fuchs to Kittsee. Already on 12/24/1904 was Dr. Fuchs Primararzt and remained a capable, reliable helper.

During the 1st World War, the hospital became a sickbay, two smaller rooms were reserved for civilian patients. Dr. Batthyány assisted the wounded, his wife Maria Theresa, assisted him.

After the war, as the Burgenland came to Austria, the Private Hospital of the Bgld was. over state government and conducted as a public hospital from 08.31.1922. At the expense of the country, the hospital has been expanded to 160 beds. In 1927 was at the suggestion of the Health Department of the Bgld. State government, another operating room built, and a new X-ray machine acquired.



In March 1943, the patient, the staff and the medical equipment were evacuated by ship to Passau and housed in a convent at Marienstift Donauhof. After returning with many obstacles the hospital in 1945

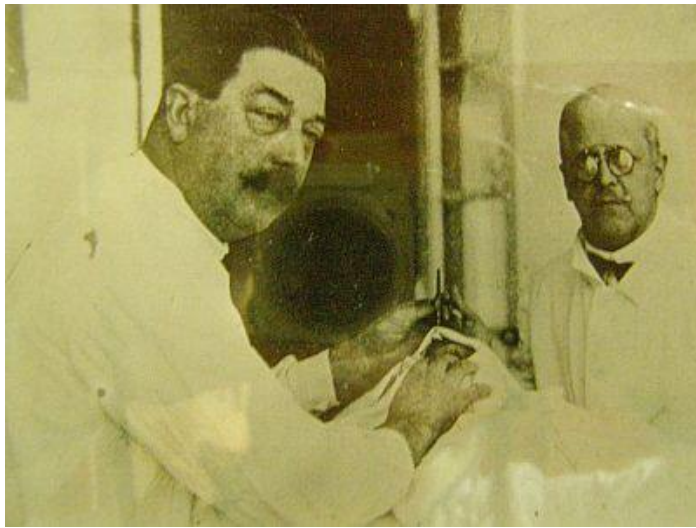
seized by the Russians. On 01/08/1946 the return of the hospital facility in the Province of Burgenland took place. In 1983, new installation of the internal division took place. 1987-1992 the annex of the surgical department incl. Function rooms was realized.



Since 1993 belongs the A.Ö. Hospital Kittsee Burgenland to hospitals-

Ges.m.b.H. (KRAGES). 1993-1994 the old stock of the surgery has been completely refurbished. From 1998, was begun with the additional construction of a new Internal Station and ends with Juli 1999th Then the old stock of the Internal department has been extensively renovated and converted into a hospital wing and Internal ambulance. In June 2002, the opening of the interdisciplinary outpatient clinic was performed.

Austrian X-Plane Design Group



On March 23, 2003, Dr. Ladislaus Batthyány in Rome was beatified. With the preparation of the beatification has already begun in the 40s. An important precursor for the beatification took place in 1992, when Prince Batthyány by the Vatican Congregation for the Causes of Saints for "Servant of God" has been declared.

In May 2006, the new building of the Intermediate Care Unit (IMCU) was opened. In January 2007, the

trade focus Urology went into operation.

With 01/01/2009 the dismissal Management was launched in KH Kittsee. As free performance, the patients and their families receive targeted advice for life after hospitalization nor during the stay.

Also, the entire X-ray and fluoroscopy was modernized in of 2009.

In 2013, the clinic and the laboratory wing was rebuilt and modernized. It was created more treatment courses, to work more efficiently.

2014 IMCU (Intermediatel Care Unit) to 2 beds (ICU Intense Care Unit) has been extended.

Early 2015 the Internal department in the 2nd Internal station was IMCU-IM (Intermediate Care Unit) to a "stopover" for patients who require a high monitoring and maintenance requirements due to serious diseases, enhanced by. Today the A.Ö. KH Kittsee Although the smallest hospital in the country has, however, with more than 8,000 hospital admissions per year an occupancy rate of around 90%.

A good medical equipment, all departments are the requirements of a standard hospital justice; its proximity to Vienna makes special investigations in the shortest time possible.

Through cooperation with local doctors to be significantly reduced for patients who stay in hospital because the practitioner carries on the assistance.

(Source: <http://www.krages.at/standorte/krankenhaeuser/kittsee/das-haus/historische-entwicklung/>)



Austrian X-Plane Design Group

2. The scenery

The scene is based on publicly available information and pictures taken there at March 2016.

All buildings have been completely rebuilt.

The scenery includes night textures and realistic lighting (Only X-Plane 10).

Charts

n.a.

3. Functions (summary)

- Photorealistic Scenery
- Compatibel to OSM+autogen V6.0 from PliotBalu
- realistic ground textures at the Heliport and the surrounding
- realistic lighting of the Helipad
- realistic Markings at the Heliport and the apron
- nighttextures
- realistic lighting *)

*) X-Plane 10+ only!

4. Installation

Just copy the folder " LOAC KH Kittsee 1.0" in the compressed file after unpacking in the "Custom Scenery" - folder.

directory structure:

```
<X-Plane-Verzeichnis>/
  Custom Scenery /
    LOAC KH Kittsee 1.0/
      Earth nav data and others)
```

and restart X-Plane.



Austrian X-Plane Design Group

5. Recommended settings

To visualize all light effects, HDR should be activated. The higher the settings for "texture resolution" and "airport detail" the better the quality of the scenery but the more affect on the FPS ratio.

"runways follow terrain contours" has to be OFF!

6. Required Software

X-Plane® Version 10.45+ or 9.7

7. Used Libraries

none

8. Recommended addons

Although the scenery will work without any addons, we recommend to use the following ones for the whole experience (pictures taken with addons installed):

OSM Europe osm+autogen by PilotBalu,

Download: http://simheaven.com/?page_id=23

to have streets and buildings from OSM and autogen where is no coverage of such data.

or

Osm Austria beta6.0 by PilotBalu

Download: <http://simheaven.com/experimental/>

HD Mesh Scenery v2 by alpilotx

Download: <http://www.alpilotx.net/downloads/x-plane-10-hd-scenery-mesh-v2/>

Europe Library von LyAvain,

Download: http://simheaven.com/?page_id=14

to see European instead of US buildings.

9. Credits

LAMINAR RESEARCH®

Ben Supnik

marginal

X-Plane®

[WED](#) (Version 1.2.1r3 verwendet)

[Sketchup-Plugin](#)



Austrian X-Plane Design Group

10. Betatester-Team

all members of AXDG.

11. License terms

This scenery is freeware and stays in the possession of the developer/s. Upon installation of the freeware the user accepts the terms of use. It is not allowed to upload the scenery or parts of it to other websites without the explicit permission in writing of the developer/s. Furthermore it is forbidden to use the scenery or parts of it on a commercial basis without the explicit permission in writing of the developer/s. Changes and modifications for the private use are allowed. But it is not allowed to share such changed or modified versions without the explicit written permission from the developer/s.

Apart from that the respective terms of copyright law are applicable.

The developer/s are not responsible for any malfunctions or possible failures of hard- or software in connection with this scenery. Under <http://forum.aerosoft.com/index.php?forum/621-freeware/> the developer/s are available for questions or remarks regarding this scenery but cannot give the guarantee that this scenery will work on all computer systems.

Have fun with arrivals and departures in Kittsee.

oe3gsu, Gerhard

